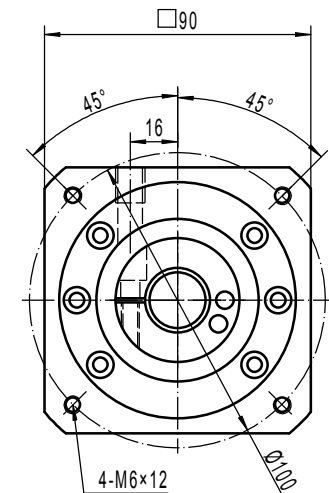
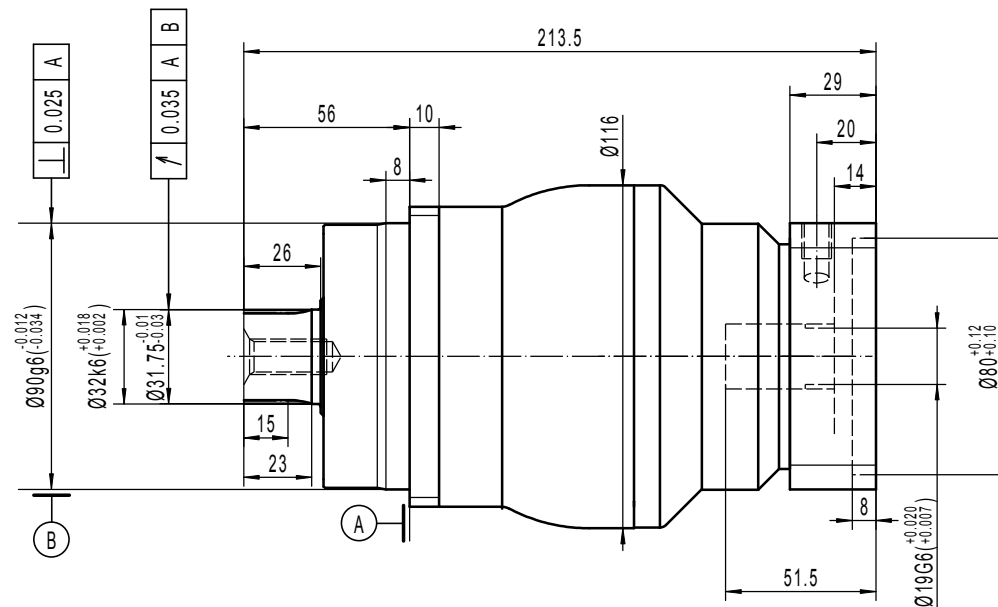


DIN 5480 SPLINES  
W32x1.25x30x24x6m



Note 1: This drawing shows the dimensions of X-Treme-SQ-ST-100 - 2 stages (It is common to all ratios from 12 to 100)


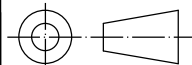
Note 2: Smooth or keyed shaft versions available at no charge

Note 3: This version is using a compact input stage. In case of need for more torque, please select the standard version.

Note 4: Full technical ratings can be found on [www.reckondrives.com](http://www.reckondrives.com)

Note 5: Our technical support team can provide accurate data about your specific application at [drawing\\_request@reckondrives.com](mailto:drawing_request@reckondrives.com)

©Reckon Drives, 1, rue Georges GUYNEMER, 42160 ANDREZIEUX-BOUTHEON, FRANCE / [contact@reckondrives.com](mailto:contact@reckondrives.com)

 <b>RECKON</b> Innovation needs performance	
Designed by MMI	Version 1.0
Date: 02 - 18 - 2020	
<b>X-TREME-SQ-ST-100</b> 2 stages / Compact	
Motor: Siemens 1FK7042	